

# NB SUPERINSULATED HOUSE

RETIRED ARCHITECT SHARING HIS RESEARCH AND DESIGNS USING SUPERINSULATION PRINCIPLES AS DEVELOPED IN CANADA AND THE PASSIVHAUS INSTITUTE OF GERMANY. DESIGN BASED UPON TRADITIONAL DESIGN FOUND IN NEW BRUNSWICK.

## ABOUT ME



**RICHARD LACHANCE**

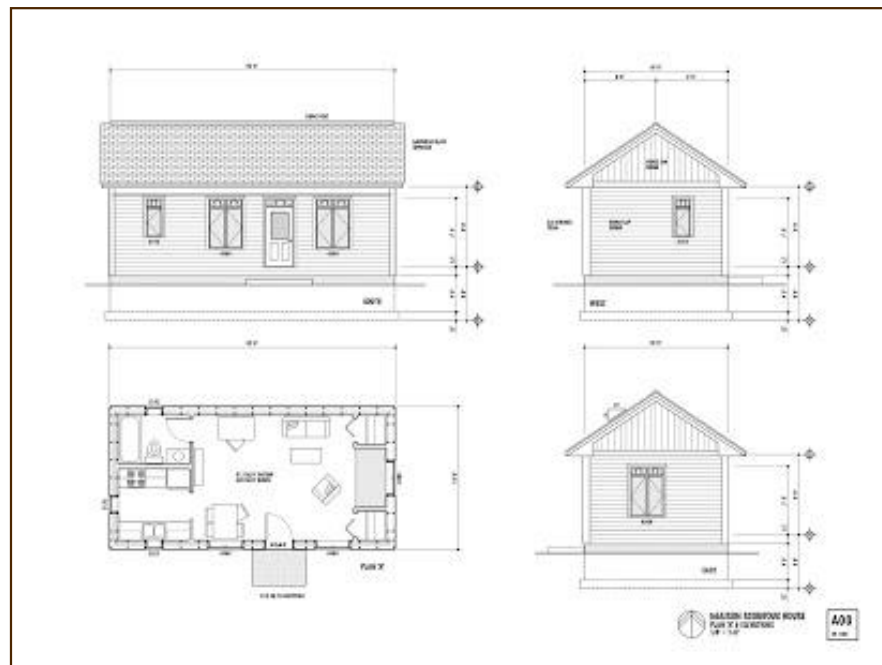
**COCAGNE, NEW BRUNSWICK,  
CANADA**

Architect retired after 22 years service with Missouri State Parks. Current interest is researching the transition to a new economy that includes energy efficient housing design.

[VIEW MY COMPLETE PROFILE](#)

SUNDAY, APRIL 4, 2010

## MAISONS SCOUDOUC HOUSES



## FOLLOWERS

### MAISON SCOUDOUC HOUSE PLAN "A"

The Maison Scoudouc House Plan "A" is designed as a small 512 sq.ft. mini-home for a single person. This size is in line with the recommendation of 500 sq.ft. per person for the size for a basic superinsulated house. A single person needs much less enclosure of spaces. In this basic house the bathroom is the only interior room with a door. The home has a basic galley kitchen and open living room. Rather than having a bedroom, this design has a sleeping alcove with adjacent closets for clothing and drawers under the bed.

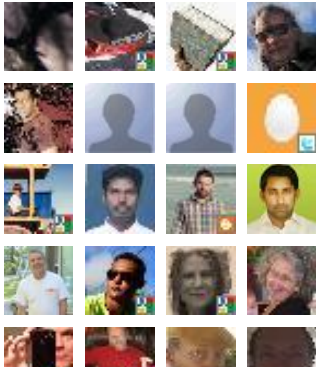
The super insulated construction techniques include ICF crawl space

Join this site



with Google Friend Connect

Members (42) [More »](#)



## BLOG ARCHIVE

► 2009 (4)

▼ 2010 (23)

► January (2)

► February (10)

▼ April (11)

MAISON GRANDE-DIGUE HOUSE

MAISON GRANDE-DIGUE HOUSE -  
Basement

MAISON GRANDE-DIGUE HOUSE -  
First Floor

MAISON GRANDE-DIGUE HOUSE -  
Second Floor

MAISON GRANDE-DIGUE HOUSE -  
Roof @ Kitchen  
Extensi...

MAISON GRANDE-DIGUE HOUSE -  
Foundation @ Root  
Cell...

MAISON GRANDE-DIGUE HOUSE -  
Roof

foundation, double exterior stud walls (R45), triple glazed casement windows sized for 16" o.c. stud spacing, and raised heel roof trusses (R60). See link to Construction Details for more information on materials and detailing.



### MAISON SCUDOUC HOUSE PLAN "B"

The Maison Scoudouc House Plan "B" design is the same small 512 sq.ft. mini-home for a single person, but with a 256 sq.ft. covered porch. The porch could also be enclosed as a heat sink during cold months and an expansion of living space during warm months. The floor plan is the same as the Plan "A" with the same features.

The superinsulated construction techniques include ICF crawl space foundation, double exterior stud walls (R45), triple glazed casement windows sized for 16" o.c. stud spacing, and raised heel roof trusses (R60). See link to Construction Details for more information on materials and detailing.

MAISON GRANDE-DIGUE HOUSE -  
Foundation

MAISON GRANDE-DIGUE HOUSE -  
Exterior Deck

MAISON ST.  
THOMAS HOUSE

MAISONS  
SCOUDOUC  
HOUSES

► 2011 (3)

► 2012 (1)



---

## BUILDING MATERIALS

EnviroShake Roofing  
Bark Shingles  
ROXUL Rockwool insulation  
Moderne Slate Roofing  
LOGIX ICF forms

---

## HOUSING PROTOTYPES

Maison Scoudouc House  
Brockbank Duplex  
Maison St. Thomas House  
Maison Grande-Digue House  
Maison Cocagne House

---

## CONSTRUCTION DETAILS

- A. Slab-on-Grade
- B. Crawl Space
- C. Full Basement
- D. Root Cellar

### MAISON SCOUDOUC HOUSE PLAN "C"

The Maison Scoudouc House Plan "C" is designed as a small 624 sq.ft. one-bedroom home or retirement cottage for a single person or couple. The 144 sq.ft. covered porch is accessible from both the living room and the bedroom. In this basic house the bathroom is the only interior room with a door, but a door could be also be added at the bedroom for privacy. The plan contains a combination living / dining room with an L-shape kitchen, bedroom and full bath.

The superinsulated construction techniques include ICF crawl space foundation, double exterior stud walls (R45), triple glazed casement windows sized for 16" o.c. stud spacing, and raised heel roof trusses (R60). See link to Construction Details for more information on materials and detailing.

- E. Porch & Decking
- F. PSL & Post Bearing
- G. PSL & Bearing Wall
- M. Second Floor Framing
- N. Bearing Wall Framing
- P. Roof Framing
- Q. Corner Framing
- R. Larsen Truss Framing
- S. Doors & Windows
- Z. Drawing Index

---

## INTERESTING RESOURCES

- Better Place Electric Car
- Canada Green Building Council
- Cohousing Canada
- Cohousing US
- EnerGreen Builders Co-operative
- Green Building Advisor
- NB Community Wind Energy Initiative
- New Urbanism
- OVE Joseph Lstiburek
- OVE Optimum Value Engineering
- PassivHaus Institut Germany
- Pocket Neighborhoods By Ross Chapin
- R2000 Program
- Riversong Truss
- Rocky Mountain Institute
- Ross Chapin Architect
- Solar Nova Scotia
- TED Idea Video Site
- The Abbetfield House
- The Green House Project
- The Halls Creek Villages in Moncton



### MAISON SCODOUC HOUSE PLAN "D"

The Maison Scoudouc House Plan "D" is designed as a small 688 sq.ft. one-bedroom home or retirement cottage for a single person or couple. The 176 sq.ft. covered porch is accessible from both the living room and the bedroom. In this basic house the bathroom is the only interior room with a door, but a door could be also be added at the bedroom for privacy. The plan contains a combination living / dining room with an L-shape kitchen, bedroom and full bath. In addition to the private bedroom, this design also has a sleeping alcove with adjacent storage closets and drawers to accommodate daytime napping and visitors.


The superinsulated construction techniques include ICF crawl space foundation, double exterior stud walls (R45), triple glazed casement windows sized for 16" o.c. stud spacing, and raised heel roof trusses (R60). See link to Construction Details for more information on materials and detailing.

POSTED BY RICHARD LACHANCE AT 6:17 AM 

LABELS: PASSIVE DESIGN, SUPERINSULATED, SUPERINSULATED HOUSE, SUPERINSULATION

---

### 6 COMMENTS:

 Sarah said...  
 Informative Blog. thanks for sharing such a good stuff on Roofing.  
 MAY 15, 2010 AT 2:20 AM

 Roof Ventilators said...

The Hawkins House  
The Original Green  
The Uphill House  
Transition Cocagne  
(English/French)  
passivHaus Canada  
passivHaus UK  
passivHaus US (PHIUS)

---

Great blog.

Roof ventilator is the motor-driven fan unit equipped with durable waterproof exhaust hood. It is the ideal gadget to extract or supply of air through roof.

**jessimen**

JULY 31, 2010 AT 3:26 AM

houses for sale philippines said...

Great blog in here, very informative and nice work on the floor plans.

Deirdre G

JANUARY 24, 2011 AT 9:44 PM

Double Glazing Tewkesbury said...

One of the most critical factors in roof system durability is proper ventilation. Without it, heat and moisture buildup in the attic area combine to cause rafters and sheathing to rot, roof shingles to buckle.

AUGUST 9, 2011 AT 3:42 PM

 Mary said...

Thanks for sharing this, well !

Metal roofing is advantageous over many other conventional forms of roofing, especially by way of being durable, with extended longevity.

Gulf Coast Supply is a metal roofing manufacturer and supplies wholesale metal roofing and residential metal roofing materials.

<http://www.gulfcoastsupply.com/>

OCTOBER 31, 2011 AT 5:40 AM

 addypotter said...

Great work! Your stuff is fantastic. Do you use metal roofing materials in your projects very often. Personally I love the look of metal roofing. Keep up the great work!

JULY 25, 2012 AT 11:45 AM

Post a Comment

Newer Post

Home

Older Post

Subscribe to: Post Comments (Atom)