



AP Product Wire

[New Product + Material Developments]



September 21, 2016

ProductWire
Archives

Tear Down this Wall!—and Recycle It

One major hurdle to recycling in this country is the relatively low price of landfill, relates Sean Ragiel, founder of CarpetCycle, during a Social Equity and Supply Chain session at last week's Living Product Expo in Pittsburgh. As office renovations tear down fixed walls in favor of moveable partitions, now is a critical moment to prevent drywall, carpet, and ceiling tiles from entering the waste stream by including recycling in the construction specification. If a project can't support the extensive re-use of an existing building inventory, architects should include upcycling in the project specs, suggests Ragiel and fellow panelists Rachel Berman, MechoSystems; Geoff Brock, Lendlease, and Amanda Kaminsky, Building Product Ecosystems. Timing can be tricky, advises Kaminsky. "Sometimes specs are being written while they're doing demolition." Other times, it's a matter of having the proper recycling infrastructure nearby, reminds Brock, Sustainability Director at Lendlease. A hack suggested by Armstrong Ceilings' environmental sustainability manager, Anita Snader, is to download pre-penned demolition specifications written to address materials to be recycled during demolition and construction. Below is a C2C platinum product discovered at Living Product Expo and some selections from APs September issue.

Megan Mazzocco, Senior Editor

new & noteworthy:

Barking Up the Right Tree

Founder Chris McCurry spoke passionately of the Bark House's exterior Cradle-to-Cradle-certified Poplar bark siding at Living Product Expo. The company was founded to utilize Recycled Appalachian Wood Waste into exterior products; as the desire for the appeal and charm of this authentic exterior wood experience has grown, product lines have been adapted to suit interior applications. The untouched lichens remain in tact on the rustic surface of the reclaimed bark panel. Shown here is the company's white birch bark veneer laminate.

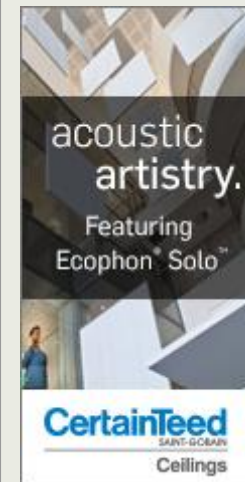


FREE

Streaming
Video ConEd
for Architects

Preferred by
architects 3 to 1

TheContinuingArchitect.com





FASTPath to this product... [Click Here](#)



Click Into Place

GerfloorUSA's newest resilient flooring product, Creation Clic, makes commercial flooring installations easier, quicker and cleaner. The ¼-in. thick vertical interlocking LVT requires minimal sub-floor prep and installs with just a mallet. Nine new styles add to a collection that resembles woods, minerals, concrete and stone.

FASTPath to this product... [Click Here](#)



Renewed Lease on Wall Life

Novelio Nature wallcoverings from **Saint-Gobain** combine high-end aesthetics with durability and environmental properties. Easy to install and maintain, the washable material is not affected by water or sunlight, providing an elegant wall finish over a long period of time. The versatile system has a natural feel and is paintable, giving walls several lives.

FASTPath to this product... [Click Here](#)

Glass Vanities

These delicate jewel boxes from **Topex Design** add gleaming color to its Armadi Art Aqua collection. The latest aesthetic for a bath vanity comes in 200 RAL hues of back-painted glass for a sink and cabinetry that flow together seamlessly.

FASTPath to this product... [Click Here](#)



LACANTINA DOORS
A NEW SPIN ON VINYL



NEW BLUE.
NEW POSSIBILITIES.

Guardian
CrystalBlue™



GUARDIAN SUNGUARD



Timber!

J+J's Kinetex unveiled a new 18-in.x36-in. plank and a 12-in x 48-in. demi-plank; in addition to more layout options, these dimensions elude to the more natural, organic and modern appearance of a conventional hard surface flooring. The new designs, Timber and Strata were inspired by rich textures and muted colors of national parks in the Western US. This is the first of several new design aesthetics planned for Kinetex.

FASTPath to this product... [Click Here](#)



Ninja of Hardware

DORMA's black anodized DRS Rail System plays an outstanding but diminutive role providing an elegant base material for a highly specialized red glass wall. The rail system's slim profile supports wide expanses of glass, discreetly floating the glass without obstructing its beauty.

FASTPath to this product... [Click Here](#)

Sponsored Item:

Quiet Drama: Ecophon® Solo™ free-hanging acoustical units

With premium sound absorption, excellent diffusion and a wide selection of colors and shapes, Ecophon Solo and Solo Baffles by **CertainTeed** Ceilings provide limitless possibilities for designing stunning, acoustically superior

STUC-O-FLEX
INTERNATIONAL, INC.



RUBBER LEARN MORE ▶
STUCCO FINISH

ClarkDietrich
BUILDING SYSTEMS

EQ
IQ

GET THE
FACTS TODAY.



spaces. Ecophon Solo Baffles are ideal for spaces where wall-to-wall ceiling is not possible. Demountable and able to withstand weekly wet wiping, these sound absorbing baffles are perfect for classroom, office, hallway and restaurant use. For free-hanging acoustical ceiling or wall panels, Ecophon Solo offers simple integration of lighting components and perfect light diffusion (+99%) — available in a design-unleashing palette of 9 colors and 11 shapes.

CertainTeed
SAINT-GOBAIN



[Click Here For More Information](#)

Sponsored Item:

"RUBBER" Stucco Finish vs. Typical Stucco Finish

STUC-O-FLEX® Finishes offer Extreme Crack Bridging abilities to enhance envelope integrity and mitigate water penetration issues. This durable, color integrated protective membrane resists fading, dirt pick-up, mold growth, and lasts for decades. **Stuc-O-Flex International, Inc.** created this "Breathable Elastomeric Acrylic Finish" back in 1986. Over 10,000 colors in four distinct aggregate choices from the heaviest southwest stucco to the most contemporary plaster finish — After 30 years, in 20 countries with 450 million feet in service. Nothing bridges cracks in stucco like Stuc-O-Flex.

STUC-O-FLEX®
INTERNATIONAL, INC.



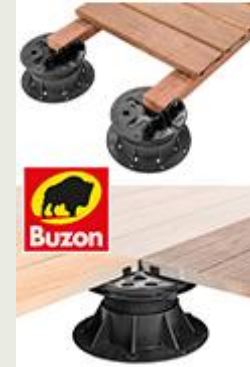
[Click Here For More Information](#)

Sponsored Item:

LaCantina Doors Launches New Vinyl Folding System

LaCantina's new Vinyl Folding system brings high quality contemporary styling to the Vinyl door market. Designed to appeal to the needs of a broader market, LaCantina's Vinyl system performs well in all

**Screwjack pedestals
for the construction
of external terraces**



**Architectural
PRODUCTS
FASTPath**

**Get this delivered to
your Inbox**
[Subscribe](#) to the
ProductWire Newsletter

Archive:

- [ProductWire Archives](#)

Quick Links:

- [Home](#)
- [Editorial Submissions](#)
- [Sponsor ProductWire](#)
- [Contact us](#)
- [The Continuing Architect](#)

environments, matches popular vinyl window packages and is the ideal solution for home renovations and new construction.

Featuring contemporary styling, a narrow 2 15/16" stile and rail profile, exclusive new hardware package, multi-point locking and standard dual glazed LoE glass, LaCantina's Vinyl Folding system is available in standard and custom sizes up to 8' tall and 18' wide.



[Click Here For More Information](#)

Sponsored Item:

ClarkDietrich Launches EQ-IQ Educational Campaign

The steel stud industry has changed considerably over the last several years, with breakthrough products helping to push it forward. To focus on these advances, **ClarkDietrich** recently launched the "EQ-IQ" campaign.

The effort centers around educating architects and specifiers on the benefits of equivalent, or "EQ," coatings. These specialized coatings go beyond being fully code compliant. In fact, they provide remarkable performance advantages over traditional G40 galvanized steel—including better jobsite durability and extended corrosion protection.

To learn more about our latest innovation, ProSTUD® Steel Framing with DiamondPlus® Coating, visit ClarkDietrichEQ-IQ.com



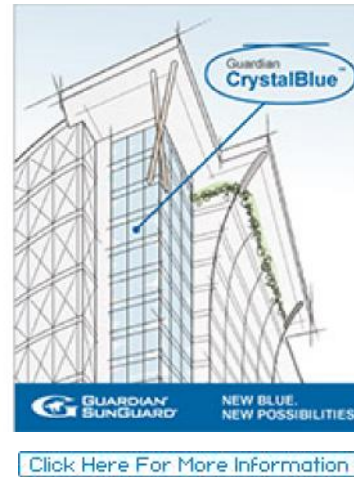
[Click Here For More Information](#)

Sponsored Item:

CrystalBlue

The latest addition to the SunGuard® commercial glass portfolio gives architects expanded choice in aesthetics and performance. CrystalBlue is a new tinted float glass, rendered in a subtle, in-demand blue.

Forward thinking in its neutrality, CrystalBlue is an invitation to complement sky, sea and surroundings. Its high light transmission brings life and well-being deep within the building core and reduces solar heat gain when combined with SunGuard coatings.



Sponsored Item:

BUZON® Pedestals

Founded in 1987 by Claude Buzon, **Buzon Pedestal International (BPI)** is the first and leading European manufacturer of screwjack pedestals. BUZON®'s high quality adjustable pedestals are very strong, durable, incredibly versatile, and designed to create raised access deck. They are ideal for supporting any kind of tiles (stone, wood, ceramic). BUZON® pedestals and their accessories are equally suited to applications at ground or roof level and from prestigious projects to industrial, performance-orientated applications. Three brands of BUZON pedestal: DPH Series for industrial and public projects, BC Series for creative and wood applications and PB Series designed especially for ceramic tiles.

