

Greenbuild 2016: News and Product Highlights You Might've Missed

 architizer.com/blog/greenbuild-2016-news-and-products/

If you were one of the estimated 20,000 people to attend Greenbuild 2016 in Los Angeles, but were stuck in the meeting rooms earning CEUs, chances are you may have missed a slew of product offerings and interesting news from the show floor. So we present a roundup of our top picks for recent under-the-radar products and news announcements, in brief.

Andersen Windows: Supporting Yellowstone National Park Projects

The window and door giant has been participating in various built projects within this American treasure, most notably a new Yellowstone Youth Campus that will house the park's immersive youth program. The campus's buildings, designed by Hennebery Eddy Architects, is aiming to achieve Living Building Challenge certification with the help of high-performance windows and insulation, PV arrays, wastewater treatment and reuse, nontoxic and low-VOC materials and furnishings, natural ventilation and various other passive measures. Andersen is not only donating windows and doors to this project, but \$500,000 to the Yellowstone Park Foundation.



Rendering of the new Yellowstone Youth Campus designed by Hennebery Eddy Architects

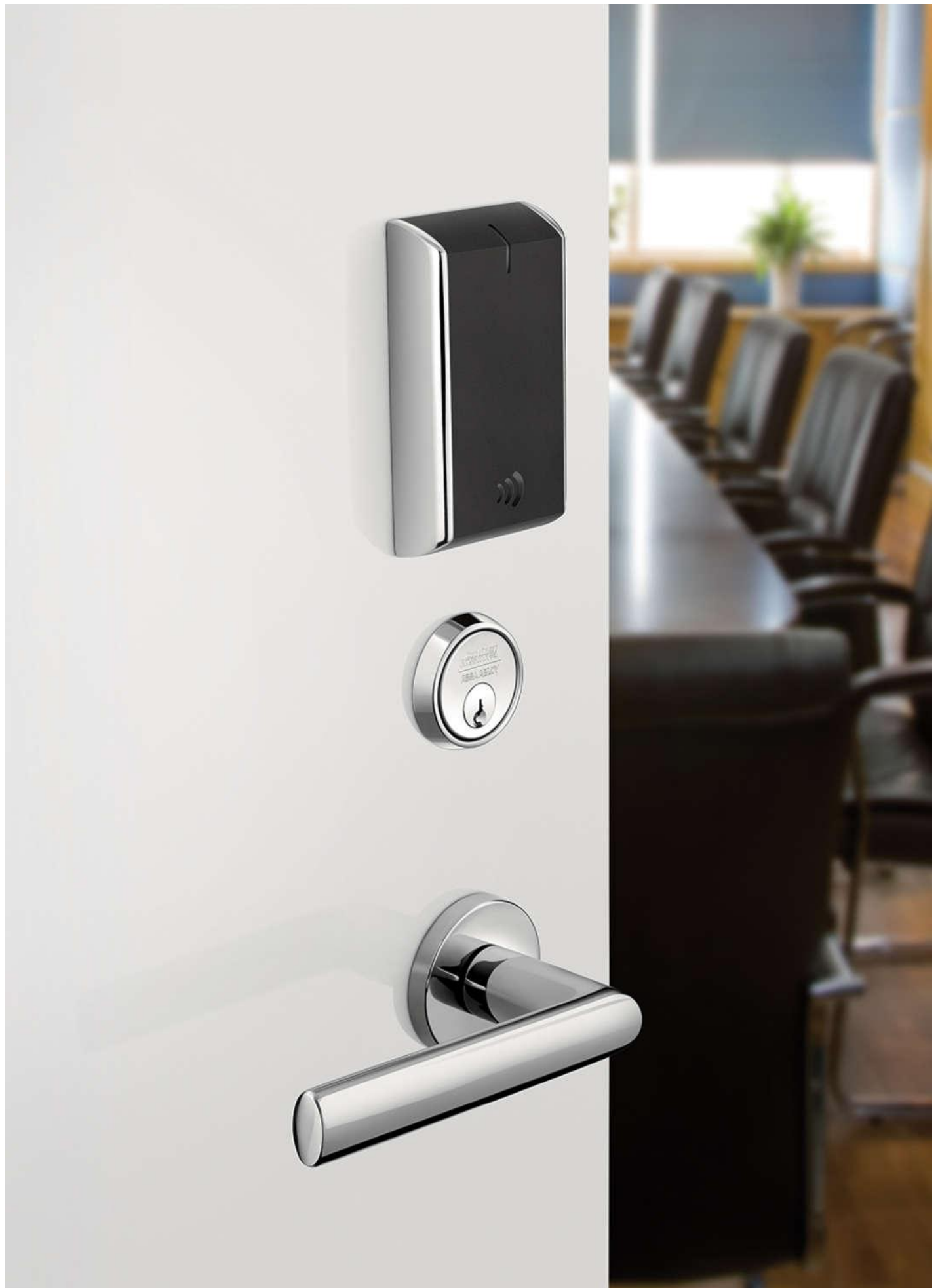
To date, Andersen has already donated wood-clad windows to the park's Lamar Buffalo Ranch and Mammoth Clinic renovations and Fibrex composite windows to the refurbished Paintbrush (aka Old Faithful Dorm, which is the first-ever LEED Platinum building in the National Park Service).



From left: Mammoth Clinic and Old Faithful Dorm in Yellowstone Park

ASSA ABLOY: IN220

The access-control and door hardware mega-company offers an array of impressive components that use significantly less electric power. Among them, the IN220 lock — under the Corbin Russwin and Sargent brands — leverages existing network infrastructure, drawing power over Ethernet. This ultimately can reduce standby power consumption by up to 76 percent compared to typical access-control locks. IN220 implements HID multiCLASS SE technology, which can support a range of credential types (key cards and fobs, for instance) and HID Mobile Access for use with mobile and Bluetooth devices.



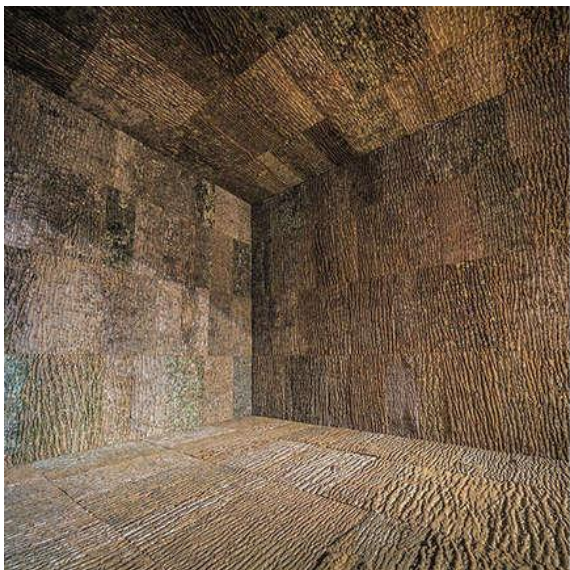
ASSA ABLOY's IN220 lock

Bark House: Bark Veneer

This rustic paneling, made of recycled tree bark, was used as interior wall coverings for the show's KB Home ProjekT installation. In addition to the bark veneer laminates and wall coverings, Bark House offers bark exterior siding and shingles, large-format bark panels, live-edge slabs, poles and twigs, fencing and custom fabrication.

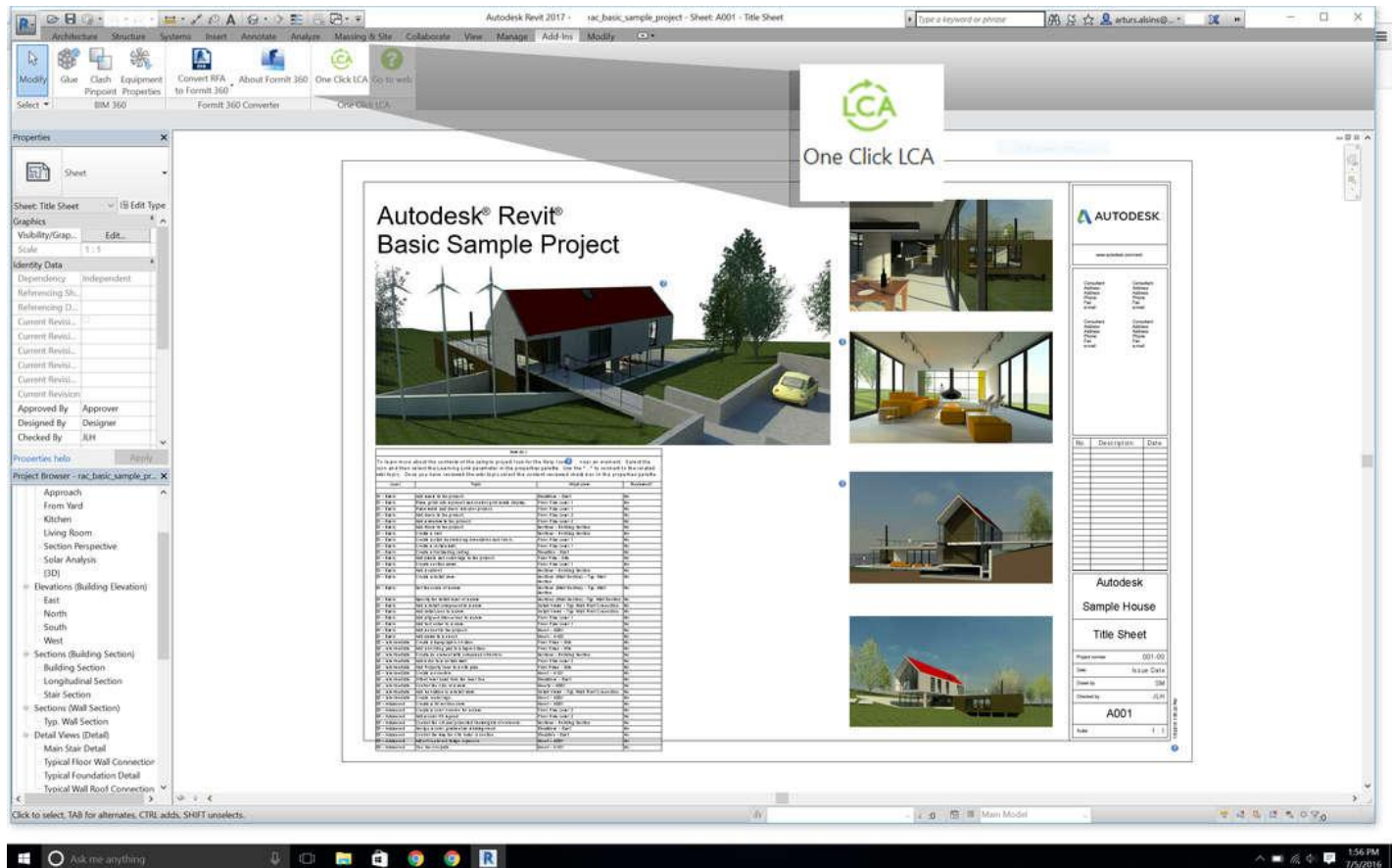


Bark House wall coverings and exterior siding



Bionova: One Click LCA

Cloud-based construction software company Bionova launched its flagship product, One Click LCA, for the North American market during Greenbuild. What it purports to do is automatically calculate life cycle assessments from BIM with one click and in under an hour. Its intuitive web interface draws data from the project's bill of materials and a comprehensive EPD database, then calculates and formats the results according to LEED LCA credit requirements — which may even result in four additional points.



Sampling Bionova's One Click LCA

LCA for LEED, USA

[Graph view](#)
[Table view](#)

Whole-building Life Cycle Assessment, ISO 14040 & ISO 14044 (TRACI 2.1.)

Sector	Global warming kg CO ₂ e	Ozone Depletion kg CFC11e	Acidification kg SO ₂ e	Eutrophication kg Ne	Formation of tropospheric ozone kg O ₃ e	Depletion of nonrenewable energy MJ	
A1-A3 Construction Materials	1,73E6	4,26E0	1,48E4	1,12E3	1,75E5	1,39E7	Details
A4 Transportation to site	8,66E4	2,26E-2	4,04E2	6,32E1	1,09E4	1,41E6	Details
B1-B3 Use, maintenance and repair	4,09E1	9,22E-6	5,83E-2	5,81E-2	5,5E-1	5,84E2	Details
B4-B5 Material replacement and refurbishment	3,01E3	4,59E-5	2,3E1	2,63E0	2,79E2	3,82E4	Details
C1 Deconstruction	2,27E4	5,12E-3	3,24E1	3,23E1	3,06E2	3,25E5	Details
C3-C4 Deconstruction waste processing	1,71E5	2,81E-2	5,75E2	8,68E3	1,28E4	1,94E6	Details
Total	2,02E6	4,32E0	1,59E4	9,89E3	1,99E5	1,76E7	
Baseline building Total	2,44E6	5,24E0	1,93E4	1,25E4	2,39E5	2,09E7	
Optimized design compared with Baseline building	-17,5 %	-17,6 %	-17,9 %	-20,7 %	-16,7 %	-15,6 %	
	Show graph	Show graph	Show graph	Show graph	Show graph	Show graph	

Draper: Graphic Shades

Known for shading products that provide excellent solar heat gain and glare control, Draper showcased its ability to customize the textiles with graphics enabling shades to pull double duty as signage or even decoration. The graphic shades are printed in-house using water-based latex inks that are UL ECOLOGO and Greenguard Gold certified as they're odorless and require no special ventilation. The printing supplies themselves are recyclable after use, as are the cardboard containers that house the ink cartridges. Additionally, Draper offers a number of Greenguard Gold certified fabrics.

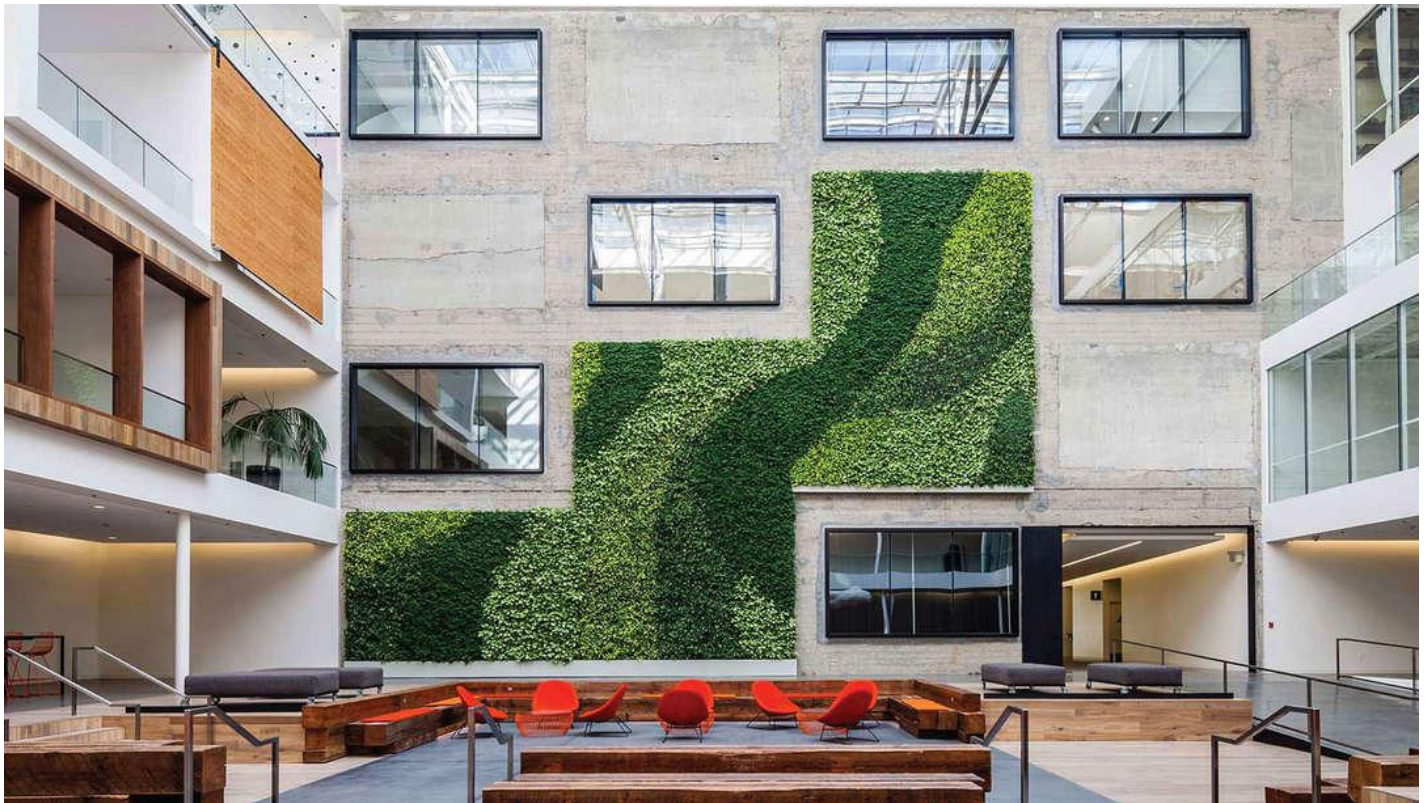




Draper's FlexShade with custom graphics

GSky Plant Systems: Versa Wall

Think of this system as an indoor paint-by-numbers or pixelated green wall. It utilizes individual plant pots held in wall trays for easy removal and maintenance. A closed system pumps water to the top, which in turn flows to the bottom from tray to tray without spillage. And the trays are designed to hold a measured amount of water for each individual plant to ensure a healthy wall. The company offers standard wood trim across the top, sides and bottom of the walls, though custom wood, metal or recessed options are also available.



GSky's Versa Wall

Interface: GreenCircle Certified Environmental Facts Labels

Always trying to push the envelope in sustainable design, carpet company Interface debuted a new third-party certification from GreenCircle that reads much like a nutritional label on foods. These, however, list environmental and human health attributes as well as environmental footprints from the manufacturing process. Currently, the labels are attached to the company's GlasBac and GlasBacRE products with Nylon 6 and 6,6 yarns.

Certified Environmental Facts™

Company: Interface

Product: Nylon 6 or Nylon 6,6 on GlasBacRE

Plant Locations: LaGrange and West Point, GA

Product Specific:

Total Recycled Content	80%
Pre-Consumer	65%
Post-Consumer	15%
Regional Raw Material Sourcing	92%
Carbon Footprint Reduction - Per Sq. Yd. ¹	-33%
2011 (kgCO ₂ eq)	6.96
2015 (kgCO ₂ eq)	4.66
Take Back Recycling Program	<input checked="" type="checkbox"/>
Recyclable ²	59%
Published EPD	<input checked="" type="checkbox"/>
NSF-140 Certification	Platinum Certification
Low-Emitting Materials	Green Label Plus

Material Ingredient Reporting Certification:

LEED v4 Compliance Certification	
Option 1 - Manufacturer Inventory*	<input checked="" type="checkbox"/>
Option 2 - 100% No GreenScreen LT-1	<input type="checkbox"/>
Option 2 - 150% No GreenScreen BM-1	<input type="checkbox"/>
Cradle to Cradle Certification	<input type="checkbox"/>
Level Achieved	
Verified Declare Label	<input type="checkbox"/>
Verified HPD	<input type="checkbox"/>

Manufacturing Specific:

Carbon Emissions Reduction - Facility ^{3,4}	-99%
2011 (total metric tonnes CO ₂ eq):	6,414
2015 (total metric tonnes CO ₂ eq):	17
Carbon Emissions Neutral - Scope 2 Only	<input checked="" type="checkbox"/>
Energy Usage Reduction ⁵	-9%
2011 (total MJ):	218,382,820
2015 (total MJ):	213,388,132
Percent Renewable Energy Usage ⁵	+99%
2011 (total MJ):	90,898,841
2015 (total MJ):	213,096,684
Water Usage Reduction ³	-3%
2011 (total gallons):	4,167,958
2015 (total gallons):	4,344,654
Outgoing Waste to Landfill Percent Change ³	+16%
2011 (total lbs):	821,380
2015 (total lbs):	1,039,480
Waste Diversion from Landfill	96%
ISO 14001 Certified	<input checked="" type="checkbox"/>
ISO 9001 Certified	<input checked="" type="checkbox"/>

Baseline Year: January 2011 - December 2011
 Evaluation Period: January 2015 - December 2015
 Certification Number: 16-0248
 Certification Period: 9/1/2016 - 8/31/2017
 For more information on the
 Certified Environmental Facts of this product,
 please contact: info@GreenCircleCertified.com.
 www.GreenCircleCertified.com

© Copyright 2016 by GreenCircle Certified, LLC

1. Product carbon footprint is based on a product recipe calculated using the sales-weighted average for yarn weight.
2. Percentage indicates internal recyclability. Product may be 100% recycled at end-of-life in certain infrastructures.
3. Percentage compares 2011 versus 2015 metrics benchmarked per square yard of carpet produced.
4. Carbon emissions reduction results include both Scope 1 and Scope 2 emissions. Carbon emissions reductions and total metric tons of CO₂eq calculated using a market based approach and financial instruments.
5. Includes on-site solar PV generation, on-site landfill gas, purchase of wind RECs and purchase of directed biogas.

*Certification pending.



Certified Environmental Facts™

Company: Interface

Product: Nylon 6 or Nylon 6,6 on GlasBac

Plant Locations: LaGrange and West Point, GA

Product Specific:

Total Recycled Content	66%
Pre-Consumer	64%
Post-Consumer	2%
Regional Raw Material Sourcing	90%
Carbon Footprint Reduction - Per Sq. Yd. ¹	-28%
2011 (kgCO ₂ eq)	9.12
2015 (kgCO ₂ eq)	6.49
Take Back Recycling Program	<input checked="" type="checkbox"/>
Recyclable ²	57%
Published EPD	<input checked="" type="checkbox"/>
NSF-140 Certification	Gold Certification
Low-Emitting Materials	Green Label Plus

Material Ingredient Reporting Certification:

LEED v4 Compliance Certification	
Option 1 - Manufacturer Inventory*	<input checked="" type="checkbox"/>
Option 2 - 100% No GreenScreen LT-1	<input type="checkbox"/>
Option 2 - 150% No GreenScreen BM-1	<input type="checkbox"/>
Cradle to Cradle Certification	<input type="checkbox"/>
Level Achieved	
Verified Declare Label	<input type="checkbox"/>
Verified HPD	<input type="checkbox"/>

Manufacturing Specific:

Carbon Emissions Reduction - Facility ^{3,4}	-99%
2011 (total metric tonnes CO ₂ eq):	6,414
2015 (total metric tonnes CO ₂ eq):	17
Carbon Emissions Neutral - Scope 2 Only	<input checked="" type="checkbox"/>
Energy Usage Reduction ⁵	-9%
2011 (total MJ):	218,382,820
2015 (total MJ):	213,388,132
Percent Renewable Energy Usage ⁵	+99%
2011 (total MJ):	90,898,841
2015 (total MJ):	213,096,684
Water Usage Reduction ³	-3%
2011 (total gallons):	4,167,958
2015 (total gallons):	4,344,654
Outgoing Waste to Landfill Percent Change ³	+16%
2011 (total lbs):	821,380
2015 (total lbs):	1,039,480
Waste Diversion from Landfill	96%
ISO 14001 Certified	<input checked="" type="checkbox"/>
ISO 9001 Certified	<input checked="" type="checkbox"/>

Baseline Year: January 2011 - December 2011
 Evaluation Period: January 2015 - December 2015
 Certification Number: 16-0247
 Certification Period: 9/1/2016 - 8/31/2017
 For more information on the
 Certified Environmental Facts of this product,
 please contact: info@GreenCircleCertified.com.
 www.GreenCircleCertified.com

© Copyright 2016 by GreenCircle Certified, LLC

1. Product carbon footprint is based on a product recipe calculated using the sales-weighted average for yarn weight.
2. Percentage indicates internal recyclability. Product may be 100% recycled at end-of-life in certain infrastructures.
3. Percentage compares 2011 versus 2015 metrics benchmarked per square yard of carpet produced.
4. Carbon emissions reduction results include both Scope 1 and Scope 2 emissions. Carbon emissions reductions and total metric tons of CO₂eq calculated using a market based approach and financial instruments.
5. Includes on-site solar PV generation, on-site landfill gas, purchase of wind RECs and purchase of directed biogas.

*Certification pending.



Kirei: Geometry Tiles

Part of the company's EchoPanel series, geometry tiles are simply peel-and-stick modules that can be used to compose visually striking, sound-dampening walls. The series comprises squares, triangles, pentagrams (new), hexagons and rectangles that come in 20 colors and offer an NRC rating of approximately 0.36.



Kirei's eco-felt acoustic Geometry Tiles

MechoSystems: EcoVeil Sheer

The 100-percent polyester EcoVeil Sheer shade cloth boasts a myriad of green attributes: It's PVC-free, Greenguard Gold certified and Cradle to Cradle Material Health Assessed at the Bronze Level, comes with an HPD and Declare label for material transparency — and is the first commercially available shade cloth to pass NFPA 701 without utilizing any chemical flame retardants. This enables it to meet the stringent Healthier Hospital Initiative Safer Chemicals Challenge. The textile — which is woven from pigmented yarns — sports a soft, natural appearance and can be specified in 1- or 3-percent openness in white, gray and neutral hues, making it ideal for just about any interior style.



MechoSystems' EcoVeil Sheer

Porous Pave: Pour-in-Place Permeable Paving With Fine-Cut Chips

Chunky poured-in-place permeable paving can get unsightly, so to offer the same effective stormwater control with a refined, smoother appearance, Porous Pave now produces a composition of fine-cut 1/8- to 1/4-inch recycled rubber chips. Two formulations for this product are available: XL is made with 50-percent rubber chips and 50-percent stone aggregate with a moisture-cured liquid binder, while XLS uses 100-percent rubber chips. All rubber is sourced from discarded tires reclaimed from landfills.



A comparison of Porous Pave's original pour-in-place permeable paving (left) and the smoother version (right).

SageGlass: Installation Atop Iconic US Bank Tower Completed

A new hotspot designed by Tag Front, 71Above restaurant and bar is situated — obviously — on the 71st floor of the iconic US Bank Tower in Downtown Los Angeles. But with the dramatic 360-degree views of the city come solar heat gain and glare issues. SageGlass was thus brought onboard to supply nearly 3,000 square feet of electrochromic glass, enabling dynamic control of sunlight coming in without obstructing the views outward. Lucky show attendees were transported to view the recently opened venue and see the electronically tinted glass in action.



SageGlass's installation at 71Above



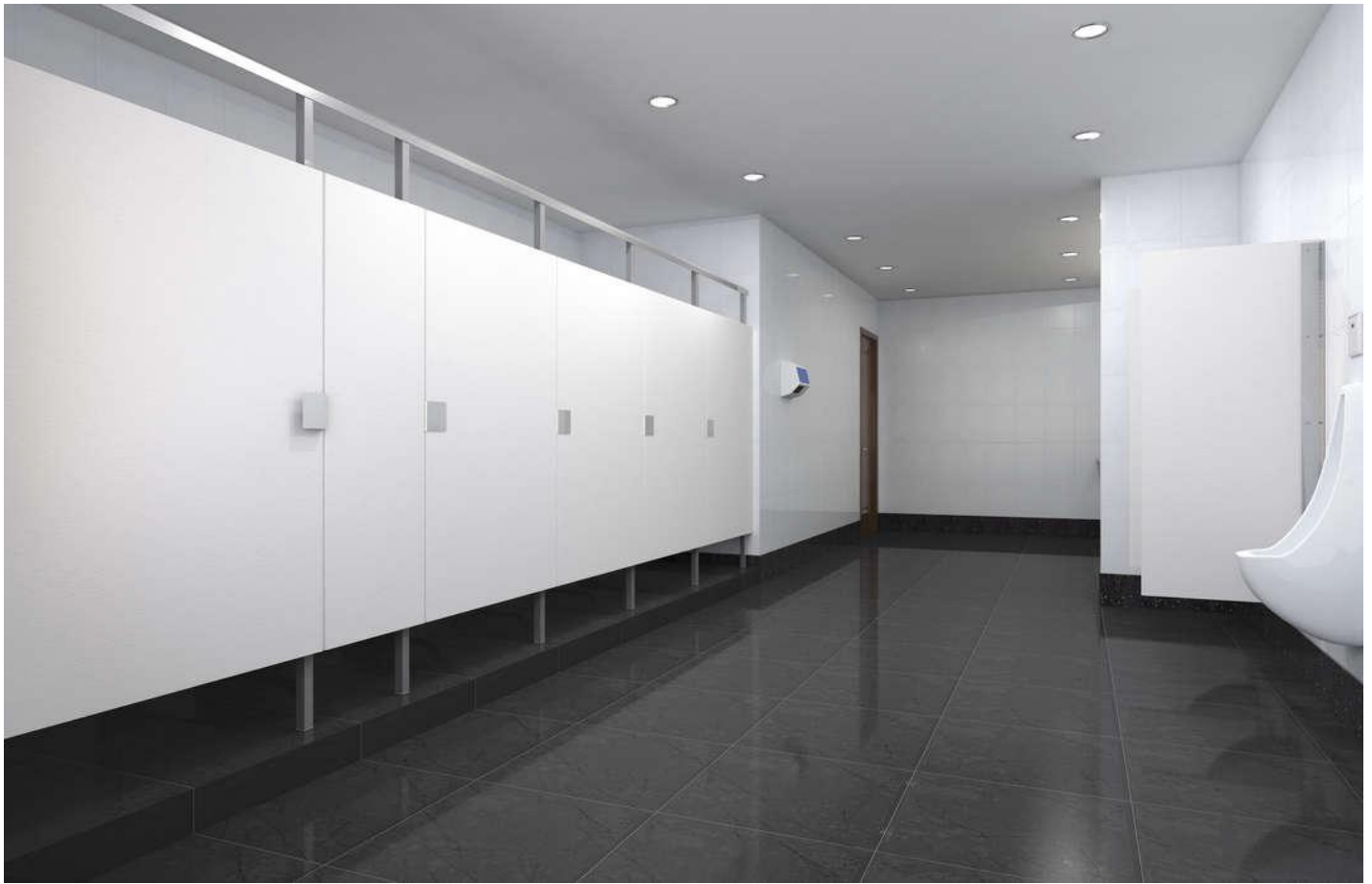


Scranton Products: Eclipse

Bathroom stall partitions are normally meant to afford visual privacy, but poorly installed partitions can result in wide cracks between doors and panels. Scranton, the same company that makes the aptly named Hiny Hider stalls, now offers a no-sight-line system called Eclipse. Sporting a contemporary aesthetic, Eclipse partitions utilize innovative hinges, brackets and posts to eliminate the gaping cracks. The system is available in 55-, 62- or 72-inch heights in a range of materials, styles and colors.



Eclipse from Scranton Products



Walker Glass Company: AviProtek E

With completely glazed building designs becoming more of a norm these days, more frequent bird strikes are a legitimate concern. Help save the avian population while also saving energy with this product. AviProtek E is PPG's Solarban low-e glass that's been acid-etched by Walker with visual markers that help reduce the chance of bird collisions. Different etch patterns are available on Solarban 60, 67 or 70XL glass.



Walker Glass Company's AviProtek E is bird-safe and low-E.

