

# ARCHITECTURAL RECORD

CELEBRATING 125 YEARS

bnp  
media

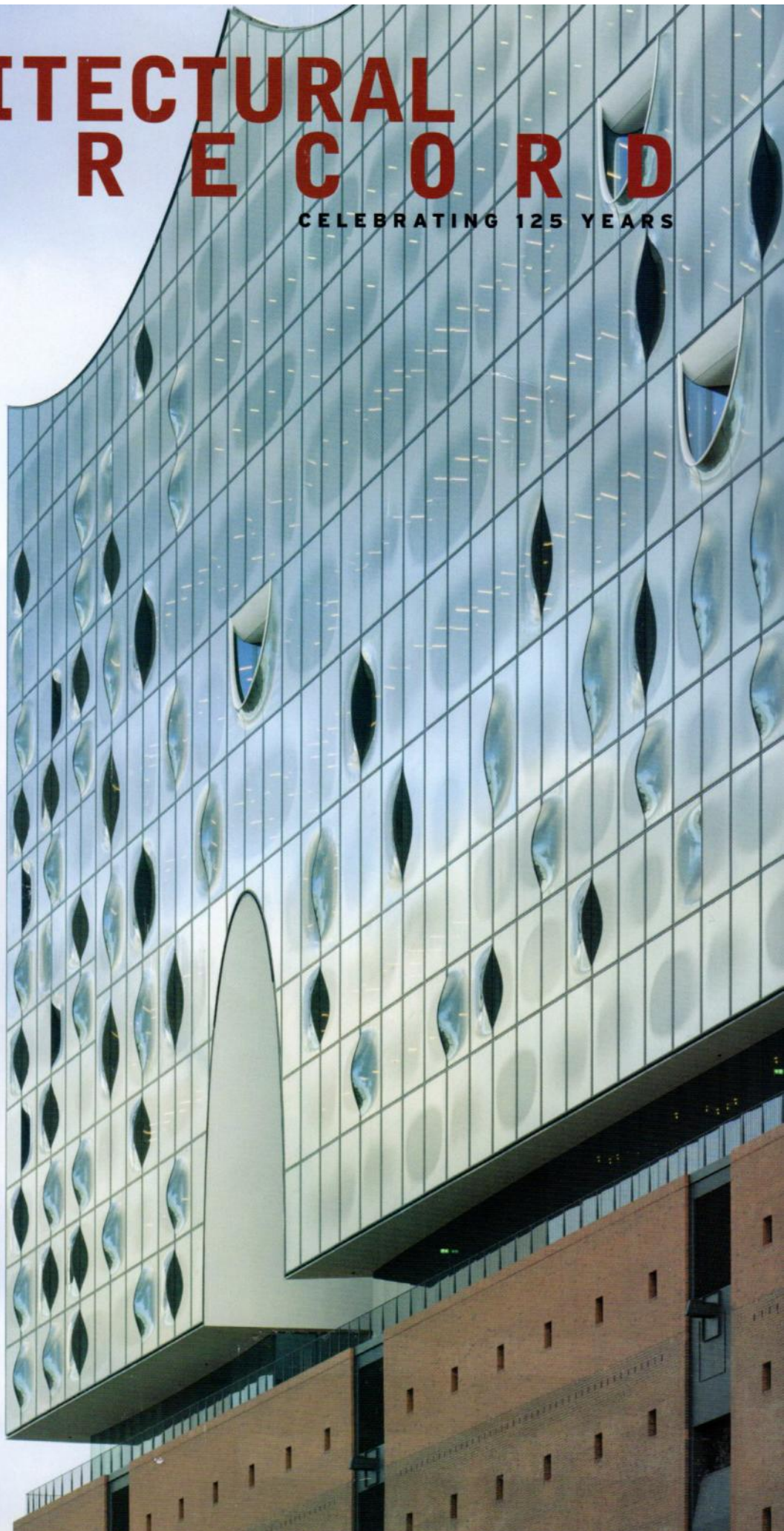
12  
2016

\$9.95

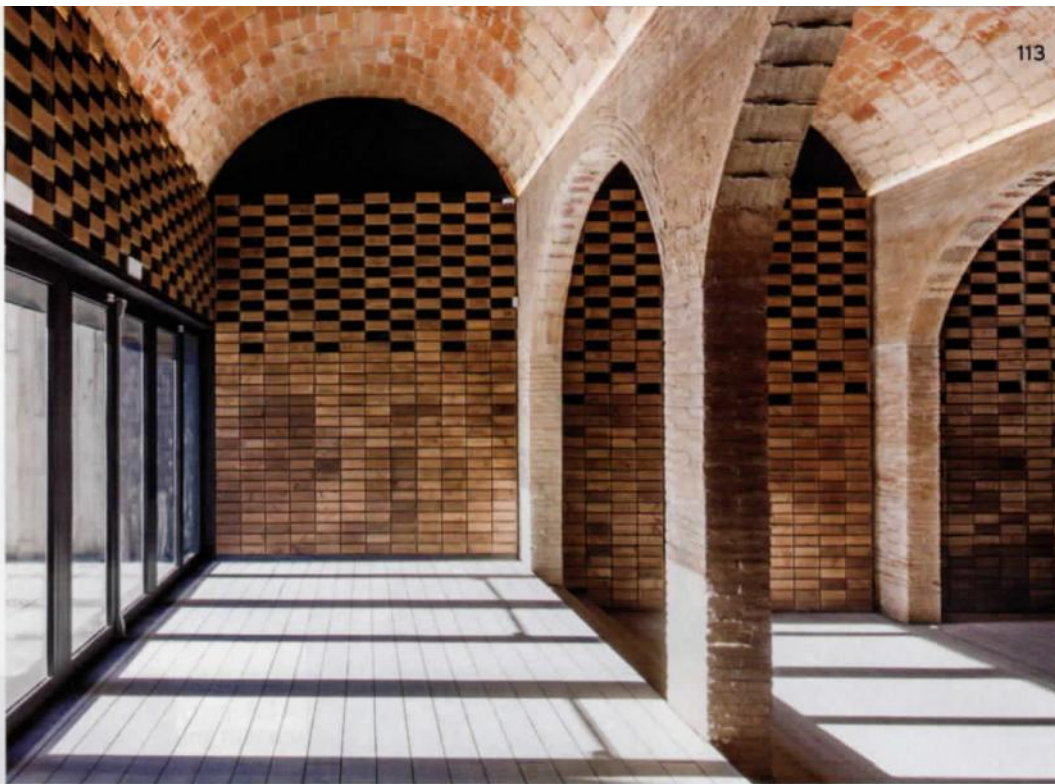
www.architecturalrecord.com

## Arts Centers

+ Design Vanguard 2016  
Record Products



- 114 **FACADES**
- 116 **FINISHES & SURFACING**
- 120 **FURNISHINGS**
- 122 **HARDWARE, SOFTWARE & CONTROL SYSTEMS**
- 124 **HVAC**
- 126 **KITCHEN & BATH**
- 128 **LIGHTING & ELECTRICAL**
- 132 **OPENINGS**
- 134 **OUTDOOR & RECREATIONAL**



FABRIK ARCHITECTURAL MESH SYSTEM, PAGE 114

# Record Products 2016

Products incorporating sensors and connected systems, as well as those that benefit from engineering breakthroughs and that are produced via digital technologies, dominated ARCHITECTURAL RECORD's Products of the Year competition. Foreseeing this trend, we have added a ninth category – Hardware, Software & Control Systems – to the annual contest. We also ensured that the jury of architects, lighting designers, and interiors experts had extensive knowledge of engineering and production methods. Each of the six jurors rated this year's 425 entries according to usefulness, aesthetics, and degree of innovation. The winners and their flashes of genius are showcased on the following pages.

**BEST IN  
CATEGORY**

*BEST IN CATEGORY denotes the winner that received the highest total score in the group from the jurors.*

**EDITORS'  
CHOICE**

*EDITORS' CHOICE denotes the RECORD staff's selection from among the category's top-scoring entries.*

Written by **Linda Lentz, Rita Orrell, and Julie Taraska**  
Edited by **Julie Taraska**

Jurors' portraits by **Jenna-Beth Lyde**

## Jurors *All jurors are based in New York City*

**Taylor Aikin, AIA**  
As senior project architect and associate at Murphy Burnham & Buttrick, Aikin leads the firm's efforts in design, presentation graphics, and digital technologies. His many awards include Honors for Excellence in Design from his alma mater, Columbia University's Graduate School of Architecture, Planning and Preservation.

**Carrie Bobo**  
A project architect at Selldorf Architects, Bobo has served as an architectural designer and manager at A+I Design, Walsh and Purdy, and Eight, Inc. The Oklahoma native, who received an MFA from the New York Academy of Art, also is an accomplished figurative painter whose work has been exhibited around New York City.

**Melissa Goren, PE, LC, LEED AP BD+C**  
A licensed professional engineer, Goren has over 15 years' experience creating lighting designs for research, corporate, and health-care facilities including the NYU Langone Medical Center's Emergency Department and Columbia University's Butler Library. She serves as the studio manager for LightBox Studios.

**Meena Krenek, IIDA, LEED AP**  
Krenek is the interior design director of Perkins + Will's New York office, where she specializes in using visual storytelling—including text, graphics, and experiential design—to strengthen a sense of place. She is also the winner of three ASID Annual Design Excellence Awards from the Georgia Chapter.

**Enrique Peiniger, Assoc. AIA, CLD, IES**  
Peiniger is an engineer, architect, and founding principal of OVI (Office for Visual Interaction), a New York-based firm specializing in lighting design for architecture. Projects include Zaha Hadid's 520 West 28th Street residential building in New York and the Scottish Parliament in Edinburgh.

**Barry Richards**  
Richards is a principal and studio leader at Rockwell Group, where he focuses on products, productions, and playgrounds. A trained architect, he oversees the firm's furniture, lighting, and textile collections. He also creates stage sets, including those for the 81st Annual Academy Awards and the Broadway version of *Hairspray*.

## Facades

Cladding | Glazing | Moisture Barriers | Roofing



**BEST IN CATEGORY**

### Fabrik

This dry-joint architectural mesh system comprises a flexible steel framework into which component materials—such as terra-cotta, glass, or wood—can be woven horizontally, vertically, or in a pattern. The large-scale sheets may be shipped folded or rolled in coils and erected via crane to accelerate construction. The mortarless Fabrik may also be easily repaired and recycled. [shildan.com](http://shildan.com)

CIRCLE 36



### Poplar Wall Covering

These handcrafted coverings are made from repurposed poplar bark, a waste by-product in furniture and plywood manufacturing. Interior and exterior options include panels up to 12' long x 8' wide and shingles in three standard lengths. All the pieces can be treated with finishes, sanded to reveal their grain pattern, and laminated to numerous substrates. [barkhouse.com](http://barkhouse.com)

CIRCLE 38

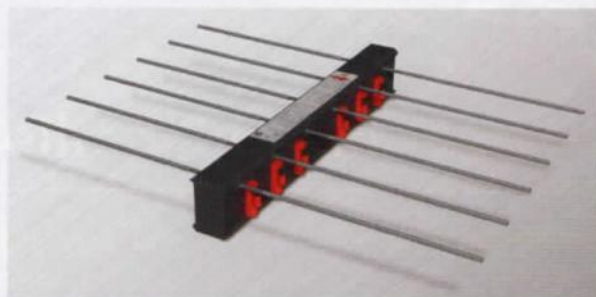


### Houdini Channel Glass

Featuring 40% recycled content, Bendheim's micro-fluted low-iron glass provides privacy, reduces glare, and allows for up to 85% light transmission. The channels can be installed horizontally or vertically; face widths range from 9" to 19" and lengths span to 23'. A tempered form of the ¼"-thick glass is available for higher wind loads.

[bendheim.com](http://bendheim.com)

CIRCLE 37



### HIT MVX Thermal Connection

An insulated connection for cantilevered balconies, the HIT MVX utilizes a double-symmetrical compression shear-bearing pad made of mortar—rather than the typical steel—to eliminate cold bridges and lower overall thermal conductivity. Element heights range from 6¼" to 12", while widths run from 10" to 39". All pieces have a two-hour fire rating. [halfenusa.com](http://halfenusa.com)

CIRCLE 39