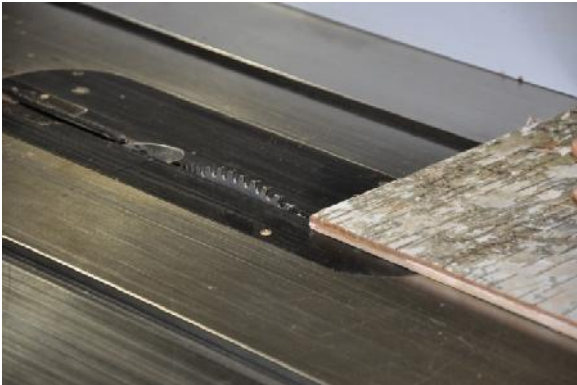


Installation Guide for Bark House® Wall Coverings

For Interior Use

*Note: These instructions are not intended for our unlaminated Bark House® Shingles and Panels.

Our one of a kind Bark House® Wall Coverings are made by gluing various species of bark and wood to a rigid substrate enabling you to present this otherwise difficult to manage texture in a way that is simple to install. Always consult with our knowledgeable sales staff before ordering as to choose the best combination of surface and substrate for your particular application. There are limitless possibilities for our wall coverings, but intended purpose will, of course, influence how we make your customized panels. For example, some of our wall coverings can be laminated to a ¼” plywood substrate while some finish material choices and end panel sizes require lamination to ½” MDF. Choices of finishes are also subject to location and type of installation. We will always be available to assist you in making the best choice for purchase as well as providing ongoing technical support to ensure that your project is properly installed.

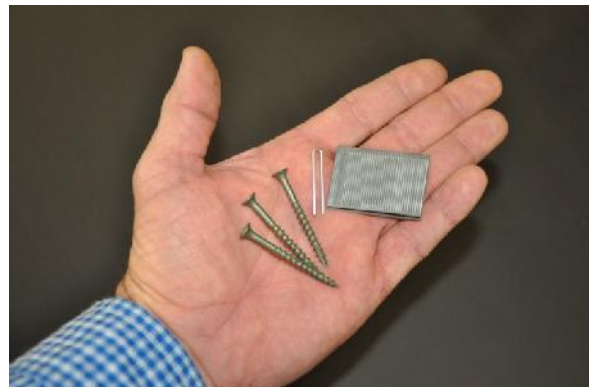


If your panel has to be site cut, ensure that you take the same precautions as with cutting any other finish veneer panel. Use proper cutting blades with the appropriate number of teeth as to minimize chipping and flaking of the bark veneers.

Once your panel is ready to install, trowel on a proper panel adhesive and then use your choice of fasteners to pin it to the wall. Only a minimal number of fasteners are required to hold the panel in place while the adhesive sets.

If you opt not to use the adhesive, be advised that thinner laminated panels could bow between studs. You will also have to use more fasteners on large panels without adhesive and this will require more hole patching. The most commonly used fasteners that we recommend are brads, finish nails, or crown staples for thinner panels, and flat head screws for thicker ones where the staples might be too short to grab a stud. Screws are also preferred when metal studs are present.

If you pin your panel with brads, finish nails or staples, then an appropriate shade of colored putty is all that is require for hiding the fastener holes.



*For more information on products for the Bark House®
visit our website at www.BarkHouse.com
or call us at (828) 765-9010*



If screws have been chosen to pin your panel, then you should use a proper wood countersink bit for pre-drilling holes for the screws. Make sure that you use the correct bit for your screw size. For example, use a #8 wood countersink for pre-drilling a #8 screw.



Adjust the drill bit depth in your countersink to correlate with screw length. Some wood countersink bits will also come with a depth stop, and if so, the stop should be set to allow the screw to tighten down at a depth sufficient to allow for an optional patch kit to cover and flush out with the surrounding field. For White Birch, Birch Leather, or Gold Birch, set your countersink to flush screws with the surface. For Fire Cherry, countersink the screws about 1/32" below the surface. For White Pine and Cherry Leather, countersink the screw head 1/16" below the surface.



Patch Kits are available for purchase to hide the screw heads. Kits include 3/8" and 1/2" round bark discs for White Pine and Fire Cherry. Kits for White Birch, Birch leather, and Yellow Birch are simply small peeled slivers of bark that can be torn smaller to just conceal screw heads.

Apply adhesive on both types and attach. You may have to slightly tap in the round discs to seat them in the countersunk hole.



For more information on products for the Bark House®
visit our website at www.BarkHouse.com
or call us at (828) 765-9010



For our heavier and thicker 3-D Wall Coverings, only screws are recommended for pinning to the wall when adhesive is used. This would include our Poplar End-Cut Panels, Poplar Pole Panels, and Locust Branch Panels. Locate your studs and find spots of exposed substrate that is in alignment and place your screws there.



Other Fastening Systems

In cases where non-permanent attachments are preferred, Z-Clips or French Cleats may be used. Other stylish mounting hardware such as Standoffs may be desired as well. Please refer to the hardware manufacturer's guidelines for installation.



*Our product lines are continuing to grow. So, if you don't see detailed instructions here for your unique wallcovering, our staff will see that you get all the information and assistance that you need. We are always available and committed to ensuring that you get a professional installation!

*For more information on products for the Bark House®
visit our website at www.BarkHouse.com
or call us at (828) 765-9010*

